

ORIGIN OF INTESTINAL LYMPH CHOLESTEROL IN RATS: CONTRIBUTION FROM LUMINAL ABSORPTION, MUCOSAL SYNTHESIS AND FILTRATION FROM PLASMA

K.S. Vasconcelos, A.M. Sipahi, H.C.F. Oliveira,
L.N. Castilho, N. De Luccia, E.C.R. Quintão

Clinics Hospital Laboratory Investigation Institute (LIM), Lipid and Gastroenterology
Units, University of São Paulo, São Paulo, Brazil

ABSTRACT

Measurement of cholesterol transport from plasma to intestinal lymph based on i.v. labeling with radioactive β -sitosterol was validated by the simultaneous i.v. administration of $4\text{-}^{14}\text{C}$ - β -sitosterol and of $1,2\text{-}^3\text{H}$ -cholesterol to two rats with bile duct, intestinal lymph, duodenum and jugular vein cannulations. In 11 other rats undergoing intestinal lymph duct cannulation, each potential source of lymph cholesterol was determined 2-3 weeks after i.v. pulse administration of $1,2\text{-}^3\text{H}$ - β -sitosterol and $4\text{-}^{14}\text{C}$ -cholesterol. For this purpose, lymph fat, after an intragastric infusion of cottonseed oil (1900mg), was used as a marker for total cholesterol mass transported into intestinal lymph. In these two experimental groups of rats, namely, in the absence and in the presence of supplemental dietary cholesterol, filtration of cholesterol from plasma to lymph and absorption of cholesterol derived from bile did not change in the presence of exogenous cholesterol. In other words, absorption of cholesterol based on the amount of cholesterol in intestinal lymph by direct measurement was comparable to the level obtained by the isotopic procedure based upon lowering of the lymph/plasma ratio of $4\text{-}^{14}\text{C}$ -cholesterol specific activity (d.p.m./mg of cholesterol).

Plasma cholesterol appearing in intestinal lymph was transported mainly in lymph lipoproteins at a density below 1.006 (i.e., chylomicrons). Esterification was not necessary for luminal cholesterol absorption under these experimental conditions.

Studies in human chyluria suggest that the bulk of intestinal lymph cholesterol derives from plasma (1). In monkeys with cannulation of the intestinal lymph duct, lymph cholesterol is not accounted for solely by mucosal synthesis or absorption from the intestinal lumen (2). Other experiments suggest that part of the fatty acyl moiety of lymph cholesterol esters is derived from plasma (3). Since intestinal lymph lipoproteins are rich in apoproteins produced primarily in the liver (4,5), it is conceivable that significant amounts of plasma lipoproteins are present in lymph (4,6).

In human chyluria, the transudation of plasma cholesterol into lymph has been evaluated by means of intravenous pulse labeling with radioactive β -sitosterol (1), a marker chosen based on the following criteria: a) simultaneous intravenously infused radioactive β -sitosterol and cholesterol distribute evenly among plasma lipoproteins (7); b) β -sitosterol is poorly absorbed by the intestine; thus little or no significant intestinal reabsorption of ra-

radioactivity excreted in bile is expected (8). Because of ongoing shifts in cholesterol and its metabolites from one body fluid to another or from intestinal absorption, a simple test of isotopic exchange rate between blood and tissues may be misleading to assess plasma transudation of cholesterol and its metabolites. However, rat intestinal lymph contains cholesterol absorbed from the bile and diet, in addition to the locally synthesized mucosal cholesterol (9), plus cholesterol from an unidentified origin (2,6), and, therefore, the sources of intestinal lymph cholesterol ought to be measurable in rat intestinal lymph using radioactive sterols according to the chyluria protocol (1). Accordingly, we validated in multicannulated rats, the intravenous use of labeled β -sitosterol to quantify the plasma to lymph transfer of cholesterol; these rats were studied using radioactive labeling of both β -sitosterol and cholesterol administered simultaneously by intravenous infusion. Furthermore, other rats with isolated intestinal lymph duct cannulae were used to determine each source of lymph cholesterol after an intravenous pulse infusion of both radioactive sterols in two separate experimental groups: 1) after a single intragastric instillation of cholesterol-free fat; and 2) a gastric instillation of cholesterol containing fat.

The distribution of plasma-derived and of absorbed cholesterol in the different lymph lipoproteins was also examined in the multicannulated rats based on the concurrent duodenal and intravenous infusion of radioactive cholesterol labeled with different isotopes.

MATERIALS AND METHODS

Radioactive sterols 1,2- ^3H and 4- ^{14}C cholesterol as well as 4- ^{14}C and 22,23- ^3H - β -sitosterol (New England Nuclear, Boston, MA and Amersham, Buckinghamshire, England), were purified on Florisil thin layer chromatography after developing with solvent system ethyl ether: heptane (55:45, v/v) (10). After drying under nitrogen, all radioactive material was dis-

solved in approximately 50 μl of ethanol admixed to 0.4ml of saline for intravenous administration, or to 0.8ml of pooled donor rat bile for duodenal gavage.

Experimental protocol

Operative procedures

Wistar male rats weighing about 360g were anesthetized intraperitoneally with sodium pentobarbital (50mg/kg body weight) and gavaged with approximately 0.5g of cottonseed oil. Plastic catheters were placed in the intestinal lymph duct, bile duct, duodenum and jugular vein before restraining in a Bollman cage. Cannulation of the bile duct interrupted the enterohepatic circulation of cholesterol, whereas nutrients and radioisotopes were chronically infused intravenously and via the duodenum. Infusions of nutrients were done by pumps (model 940 Harvard Apparatus, South Natick, MA) at the rate of 1ml per hour:

- intravenous infusion: bovine albumin (2.5g), 50% glucose (20 ml), 19.1% KCl (3.2ml) in 180ml saline.

- duodenal infusion: pooled bile from donor rats (30ml) plus glucose (9.6g) in 120ml water. Additional pulses every 4 hours of 1ml Intralipid (Darrow Laboratories, Rio de Janeiro, Brazil) containing soybean oil (10g), lecithin (1.2g), and glycerol (2.5g) as emulsion in 100ml water, were also supplied to maximize high volumes of lymph output.

The rats were subjected to two experimental protocols starting 1-2 hours after the surgery:

Protocol 1 (2 rats)

Simultaneous intravenous pulse infusion of 1,2- ^3H cholesterol (30 μCi) and 4- ^{14}C β -sitosterol (10 μCi) was utilized to validate use of the latter isotope as a method of quantifying the fraction of lymph cholesterol originating from plasma filtration.

Lymph samples containing at least 1ml/hour were collected on ice for 21 and 24 hours and blood was drawn at

4-hour intervals from the rat tail. The experiment was terminated by aortic exsanguination.

Protocol 2 (22 rats)

Simultaneous pulse infusion of $4\text{-}^{14}\text{C}$ -cholesterol ($10\mu\text{Ci}$) admixed to 0.8ml of bile was instilled into the duodenum and $1,2\text{-}^3\text{H}$ cholesterol ($30\mu\text{Ci}$) in 0.1ml saline was administered intravenously. The enteric isotope was aimed at identifying in lymph lipoprotein fractions the absorbed cholesterol and then measuring its free and esterified proportions. The intravenous infusion of radioactive cholesterol, on the other hand, was used to identify in lymph the amount of cholesterol derived solely from plasma (i.e., transudation). The contribution by duodenal absorption of ^{14}C -cholesterol was able to be ascertained through the simultaneous infusion of bile. Random samples of lymph (at least 1ml) were collected during 1-2 hours over 6 to 10 hours of experiments after starting the infusions.

Analytical procedures

Lymph samples were submitted to preparative ultracentrifugation. Chylomicrons and VLDL ($d < 1.006$) were separated from LDL plus HDL ($d = 1.006\text{-}1.21$) as previously described (11). Resultant fractions were lyophilized, extracted with chloroform and the free and esterified cholesterol bands eluted with ethyl ether from T.L.C. on silica gel H (E. Merck, Darmstadt, Germany) after developing with ethyl ether/heptane (55:45, v/v). Total cholesterol was separated by T.L.C. (10) modified with a solvent [petrol ether/diethyl ether/acetic acid (90:10:1, v/v)] (12) and determined by gas-liquid chromatography (10).

In separating free and esterified cholesterol from lymph, digitonin precipitation (13) was used and mass measured by an enzymatic assay (14). Serum free and esterified cholesterol levels were determined as described for lymph.

Aliquots were utilized for measurement of radioactivity in toluene phosphor

solution in a beta liquid scintillation counter (Beckman, model LS 100).

Calculations for Protocol 1

a) Percent of lymph cholesterol originating from plasma filtration = radioactivity in d.p.m./mg of cholesterol in lymph/plasma $\times 100$.

b) Percent of total plasma cholesterol that filters into the lymph/hour = (filtered cholesterol $\mu\text{g}/\text{h}$ /total plasma cholesterol mass in μg) $\times 100$, where filtered cholesterol ($\mu\text{g}/\text{h}$) = (d.p.m./mg of cholesterol in lymph/plasma) \times lymph cholesterol in $\mu\text{g}/\text{hour}$. In calculating the total plasma cholesterol, the plasma volume of the rats was taken as 3.88% of body weight (15).

Protocol 3--isolated lymph duct cannulation studies (11 rats)

Operative procedures

Male rats of Wistar origin weighing about 300g were used. A mixture of $4\text{-}^{14}\text{C}$ -cholesterol ($10\mu\text{Ci}$) and $22,23\text{-}^3\text{H}$ β -sitosterol (30Ci) was pulse administered intravenously and rats were fed ad libitum a cholesterol-free commercial pellet diet for two to three weeks prior to operative manipulation. After a 12-hour overnight fasting period, rats received exactly 1900mg of cottonseed oil by gavage utilizing Hamilton syringe according to two experimental groups:

1) controls received cottonseed oil only (6 rats).

2) cholesterol-fed groups (5 rats) received 80mg of cholesterol (E. Merck, Darmstadt, Germany) added to the cottonseed oil and cholesterol absorption in lymph measured simultaneously by mass and by an isotopic procedure based on the intravenous administration of the radioactive cholesterol.

The infused oil was a marker for total lymph cholesterol transported based on the completeness of absorption and exclusive transport through the intestinal lymph system (16,17). Two hours after intragastric infusion, rats underwent intestinal lymph duct cannulation (18) under

light ethyl ether anesthesia and restrained in Bollman type cages (19). Intestinal lymph was collected over ~ 3 hours and thereafter the rats were exsanguinated by aortic puncture. At least 2ml of lymph were obtained.

Analytical procedures

Lymph and serum cholesterol were measured by the combined T.L.C. and G.L.C. procedures (10). Lymph fat was measured gravimetrically (1).

Calculations

a) Total lymph cholesterol mass transported in mg was derived from $C = Ch \times G/g$ where Ch is the lymph cholesterol mass, G the intragastrically infused oil (1900mg) and g the lymph fat mass.

b) Lymph cholesterol mass derived from plasma by filtration (F) stems from the negligible intestinal absorption of the intravenously infused labeled β -sitosterol: $F = C \times \frac{^3H-\beta\text{-sitosterol}}{^3H-\beta\text{-sitosterol} + ^{14}C-\beta\text{-sitosterol}}$ in d.p.m./mg cholesterol in lymph/plasma.

c) Lymph cholesterol mass derived from *de novo* mucosal synthesis (S) = $(1 - \frac{^{14}C-\text{cholesterol}}{^{14}C-\text{cholesterol} + ^3H-\beta\text{-sitosterol}}) \times C$. This value represents synthesis in control rats only because absorption of the intragastrically administered unlabeled cholesterol in the cholesterol fed group further dilutes the lymph cholesterol specific activity in relation to plasma.

d) Absorption of endogenous cholesterol, namely biliary cholesterol (A_{end}) = $C - (F + S)$ in the control group. S in the cholesterol fed group includes the absorption of cholesterol dissolved in fat (A_d).

e) Absorption of fed cholesterol (A_d) can be derived from two methods: either as the C or the S value difference between cholesterol-fed and the control group. Isotopic calculations are based on the premise that cholesterol specific activity in bile and plasma are nearly identical when several days have elapsed after the intravenous infusion of radioactive cholesterol. Therefore, in the control

groups, $C = F + S + A_{end}$, whereas in the cholesterol fed rats, $C = F + S + A_{end} + A_d$. Absorption by lymph balance represents the true mass of cholesterol from dietary origin that is found in lymph and is measured as $C_{chol} - C_{control}$. It can also be estimated isotopically as $S_{chol} - S_{control}$ provided that the isotopic cholesterol exchange among plasma, intestinal mucosa and lumen pools is negligible during the fat absorption experimental phase.

RESULTS

Results of two multicannulated rats pulse infused intravenously with 3H -cholesterol plus ^{14}C - β -sitosterol are shown in *Table 1*. (In these bile fistula rats, lymph radioactivity must necessarily come from plasma.) Mean filtration values in the two rats were 51.1% by the 3H -cholesterol and 51.8% by the ^{14}C - β -sitosterol measurements.

Data from isolated lymph duct cannulation experiments are shown in *Table 2*. The amount of cholesterol derived from plasma based upon 3H - β -sitosterol was 56% of the total intestinal lymph cholesterol in controls, which was remarkably close to 51% found in the multicannulated rats; however, it was only 18% in the cholesterol fed rats.

Absorption of the fed cholesterol (A_d) by straightforward lymph cholesterol mass measurement (C cholesterol fed - C control) was similar to that determined by the isotopic procedure (S cholesterol fed - S control), 13.9mg and 13.4mg, respectively.

De novo mucosal cholesterol synthesis was about 20% of the total cholesterol mass transported in lymph in the control group.

Further experiments in 22 multicannulated rats (Protocol 2) aimed at identifying which lymph lipoprotein (chylomicron + VLDL as compared to LDL + HDL) carried the absorbed and the plasma-derived cholesterol and how these components were distributed between the free and the ester fractions are shown in *Fig. 1*. Most of the cholesterol

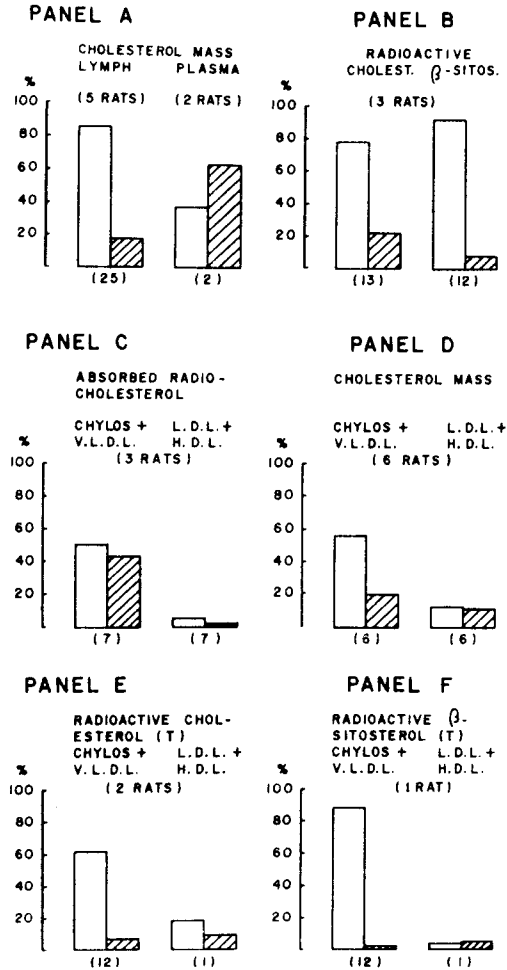


Fig. 1. Percent distribution of sterols in plasma and lymph as free \square and ester ▨ fractions in separate experiments in 22 multicannulated rats (Protocol 2); radioactive sterols were admixed to 0.8ml of bile for duodenal infusion and to 0.1ml of saline I.V. administration. Number of determinations at the bottom of each figure in brackets. Panel A: distribution of the cholesterol mass in lymph and plasma; Panel B: lymph distribution of labeled sterols after simultaneous intravenous pulse labeling with radioactive cholesterol and β -sitosterol; Panel C: labeled cholesterol in lymph lipoproteins after duodenal radioactive cholesterol infusion; Panel D: cholesterol mass in lymph lipoproteins; Panels E and F: distribution in lymph lipoproteins of the labeled sterols that transude from plasma after simultaneous intravenous pulse dose of radioactive cholesterol and β -sitosterol.

Table 1

Lymph cholesterol filtration from plasma measured in two multicannulated rats (Protocol 1). After the surgical procedure, rats were pulse infused I.V. simultaneously with 4-¹⁴C-B-sitosterol and 1,2-³H cholesterol, and lymph collected sequentially. Lymph collections started 21 hours after labeling rat #1 and 24 hours after labeling rat #2. A plateau of plasma and lymph radioactivity was attained during the whole length of the study.

Rat	Sequential collection Periods in hours	Type of Label	Percent lymph Cholesterol originating from plasma filtration	Percent of total plasma cholesterol mass filtered into the lymph per hour
1	2:45	³ H	38.87	0.41
		¹⁴ C	37.88	0.40
	5:30	³ H	35.56	0.25
		¹⁴ C	33.15	0.23
	14:40	³ H	66.58	0.62
		¹⁴ C	76.39	0.71
5:20	³ H	46.47	0.41	
	¹⁴ C	45.10	0.40	
2	2:00	³ H	41.49	0.48
		¹⁴ C	45.90	0.53
	2:00	³ H	69.86	0.62
		¹⁴ C	66.75	0.59
	4:00	³ H	49.68	0.60
		¹⁴ C	48.01	0.58
10:00	³ H	60.76	0.24	
	¹⁴ C	61.20	0.24	

mass in plasma was esterified as expected, but not in the intestinal lymph (Fig. 1a).

The radioactive free cholesterol that transferred from plasma to lymph was mostly in the nonesterified fraction (Fig. 1b). Almost 50% of the free radioactive cholesterol administered into the duodenum was transported in lymph as ester (Fig. 1c), whereas the lymph cholesterol mass was predominantly nonesterified (Fig. 1d).

Chylomicrons and VLDL, as opposed to lipoproteins of higher density, are the major carriers of lymph cholesterol, namely absorbed radioactive cholesterol (Fig. 1c), total cholesterol mass (Fig. 1d) and radioactive sterols that derive from plasma transudation (Figs. 1e and 1f). The ratio free/ester of the cholesterol mass is much higher in chylomicrons and VLDL that are made entirely by the mucosa--as compared to that in LDL+HDL (Fig. 1d). In addition, the same higher free/ester ratio of the filtered component is found in chylomicrons and VLDL (Fig. 1e and 1f).

DISCUSSION

Although the largest share of intestinal lymph cholesterol was accounted for by filtration from plasma (Table 1), its mass represented only a small portion of the whole plasma cholesterol content, that is, 11% of the plasma cholesterol mass filtered into intestinal lymph in 24 hours. The plasma derived cholesterol mass was independent of the luminal cholesterol content; that is, it did not vary with cholesterol feeding (Table 2). Consequently, it represents a passive process whereby plasma lipoproteins percolate into the intestinal mucosal lacteals.

The similarity of dietary cholesterol absorption by the direct mass measurement in lymph and by the isotopic method strengthens the conclusion that isotopic cholesterol exchange between plasma and the intestinal wall or the luminal content is negligible. These data confirm other experimental reports utilizing radioactive cholesterol administered intraduodenally (16,20).

Table 2

Origin of lymph cholesterol in two groups of rats with isolated lymph duct cannulation 2-3 weeks after simultaneous intravenous infusion of 22,23-³H- β -sitosterol and 4-¹⁴C-cholesterol (Protocol 3). Cotton-seed oil (1900mg) was administered as single intragastric dose to controls with added cholesterol (80mg) to the cholesterol group prior to the surgical procedure. Student's "t" test statistical comparison between means of experimental groups.

Experimental Groups (No. of animals) ^a	Controls (6) Mean mg \pm SD	%	Cholesterol (5) Mean mg \pm SD	%
Total Lymph				
Cholesterol (C)	6.69 \pm 1.43		20.60 \pm 5.42	
Filtration (F) ^b	3.78 \pm 0.72	56.5	3.68 \pm 1.42	17.9
Synthesis	1.56 \pm 1.33	23.3	15.01 \pm 3.16 ^c	72.9
Endogenous absorption (A _{end}) ^d	1.36 \pm 0.91	20.2	1.91 \pm 1.01	9.2
Dietary absorption (A _d)				
Lymph balance			13.91	
Isotopic procedure			13.45	
Lymph fat (G) ^e	64.85 \pm 27.47		44.09 \pm 28.40	

a: each animal means one lymph sample collected; b: represented as percent of the total lymph cholesterol mass (C); p=N.S.; c: S includes absorbed unlabeled dietary cholesterol and *de novo* mucosal synthesis, thus their independent contribution cannot be known. d: p<.001. e: fat was measured during 3 hours of complete lymph collection and utilized for the calculation of the value C as shown in calculations section.

Intestinal mucosal synthesis accounted for roughly 1/5 of the lymph cholesterol mass which closely agreed with earlier reports (21,22). Another source of cholesterol in lymph is via absorption of the biliary component. Although relying upon indirect measurement methods, endogenously absorbed cholesterol was able to be measured in lymph and accounted for 1/5 of the whole lymph mass with a cholesterol-free diet.

Since most of the intestinal lymph cholesterol is non-esterified it is reasonable to conclude that in rats the cholesterol contribution from plasma and mucosal synthesis is predominantly in this form. Probably at the level of the intestinal submucosa, free-cholesterol is preferentially transferred to predominantly lighter lymph lipoproteins in accordance with the well known fast exchange rate of free-cholesterol with lipoproteins (22-24). We also found that

less than 50% of the absorbed radioactive cholesterol is esterified in contrast to other reports of 50 to 85% esterification (20,25,26). This discrepancy may be attributable to: 1) the large duodenal mass of fat administered (Intralipid) fortuitously stimulated local mucosal synthesis of cholesterol which preferentially was transported in the non-esterified form (22); 2) in our experiments the duodenal infusion contained cholesterol of bile origin only, whereas in earlier reports, a larger cholesterol mass had been administered (20,25,26). Therefore, contrary to these previous reports (20,25,27), esterification of cholesterol is not required for efficient absorption by the intestine into lymph. Although the present study did not further pursue the mechanisms involved, it nevertheless suggests that cholesterol esterification depends primarily on the mass ratio of cholesterol/fat in the diet (28-30).

In conclusion, plasma cholesterol filtration contributed substantially to the intestinal lymph cholesterol in the rat and the accuracy of measurement was corroborated in multicannulated rats by the intravenous infusion of radioactive β -sitosterol.

The contribution to the intestinal lymph of cholesterol from other sources was also determined by combining intravenous pulse infusion of radioactive cholesterol to the measurement of cholesterol mass in lymph and plasma. Most of the plasma-originated cholesterol in intestinal lymph binds to chylomicrons, which is the fraction known to transport the bulk of the absorbed luminal cholesterol. Radioactive cholesterol and β -sitosterol in intestinal lymph derived from plasma sterols were predominantly in the non-esterified form and signify that under our experimental conditions (intravenous constant infusion of radioactive free sterols), most of the plasma radioactive sterols was in the free fraction.

ACKNOWLEDGEMENTS:

The authors are thankful to Miss Angela Cristina C. Rocha for typing the manuscript. This work was supported by Medical Investigation Labs (LIM-Hospital das Clinicas-University of São Paulo Medical School) and by grant no. 81/0172-3 from the São Paulo State Research Foundation (FAPESP).

REFERENCES

1. Quintão, ECR, A Drewiacki, K Stechhahn, et al: Origin of cholesterol transported in intestinal lymph, studies in patients with filarial chyluria. *J. Lipid Res.* 20 (1979), 941.
2. Wilson, JD: Biosynthetic origin of serum cholesterol in the squirrel monkey: Evidence for a contribution by the intestinal wall. *J. Clin. Invest.* 47 (1968), 175.
3. Shrivastava, BK, TG Redgrave, WJ Simmonds: The source of endogenous lipid in the thoracic duct lymph of fasting rats. *Quart. J. Exp. Physiol.* 52 (1967), 305.
4. Krause, BR, CH Sloop, CK Castle, et al: Mesenteric lymph apo-lipoprotein in control and ethylestradiol treated rats: A model for studying apolipoprotein of intestinal origin. *J. Lipid Res.* 22 (1981), 610.
5. Windmueller, HG, PN Herbert, RI Levy: Biosynthesis of lymph and plasma lipoprotein apoprotein by isolated perfused rat liver and intestine. *J. Lipid Res.* 14 (1973), 215.
6. Strokke, KT, NB Fjeld, TH Kluge, et al: Lipid composition and cholesterol esterification in lymph. *Scand. J. Clin. Lab. Invest.* 33 (1974), 199.
7. Bhattacharyya, AK, WE Conner: β -Sitosterolemia and xanthomatosis. *J. Clin. Invest.* 53 (1974), 1033.
8. Salen, G, EH Ahrens Jr, SM Grundy: Metabolism of β -sitosterol in man. *J. Clin. Invest.* 49 (1970), 952.
9. Lindsey Jr, CA, JD Wilson: Evidence for a contribution by the intestinal wall to the serum cholesterol of the rat. *J. Lipid Res.* 6 (1965), 173.
10. Miettinen, TA, EH Ahrens Jr, SM Grundy: Quantitative isolation and gas-liquid chromatographic analysis of total dietary and fecal neutral steroids. *J. Lipid Res.* 6 (1965), 411.
11. De Lalla, OF, JW Gofman: Ultracentrifugal analysis of serum lipoproteins. In *Methods of Biochemical Analysis*, Glick D (Ed.), Interscience, New York (1954).
12. Mangold, JK: Aliphatic lipids. In *Thin-Layer Chromatography*, Stahl, E (Ed.), Springer-Verlag, New York (1969).
13. Zlatkis, A, B Zak, AJ Boyle: A new method for the direct determination of serum cholesterol. *J. Lab. Clin. Med.* 41 (1953), 486.
14. Allain, CC, L Poon, SG Chan, et al: Enzymatic determination of total serum cholesterol. *Clin. Chem.* 20 (1974), 470.
15. Bruckner-Kardoss, E, BS Wostmann: Blood volume of adult germfree and conventional rats. *Lab. Animal Sci.* 24 (1974), 633.
16. Sylvén, C, B Borgstrom: Absorption and lymphatic transport of cholesterol in the rat. *J. Lipid Res.* 9 (1968), 596.
17. Clark, ML, JT Harries: Absorption of lipids. In *Intestinal Absorption in Man*, C. Coll. I, Sladen, GEG (Eds.), Academic Press, New York (1975).
18. Warsaw, AL: A simplified method of cannulating the intestinal lymphatic of the rat. *Gut* 13 (1972), 66.
19. Bollman, JL: A cage which limits the activity of rats. *J. Lab. Clin. Med.* 33 (1948), 1348.

20. Green, MH: Chemical and isotopic measurement of cholesterol absorption in the rat. *Atherosclerosis* 37 (1980), 343.
21. Morris, MD, IL Chaikoff, JM Felts, et al: The origin of serum cholesterol in the rat: Diet versus synthesis. *J. Biol. Chem.* 224 (1957), 1039.
22. Stange, EF, JM Dietschy: The origin of cholesterol in the mesenteric lymph of the rat. *J. Lipid Res.* 26 (1985), 175.
23. Roheim, PS, DE Haft, LI Gidez, et al: Plasma lipoprotein metabolism in perfused rat livers. II: Transfer of free and esterified cholesterol into the plasma. *J. Clin. Invest.* 42 (1963), 1277.
24. Portman, OW, M Alexander, JP O'Malley: Metabolism of free and esterified cholesterol and apolipoproteins of plasma low and high density lipoprotein. *Biochem. Biophys. Acta* 619 (1980), 545.
25. Swell, L, EC Trout Jr, JR Hopper: Mechanism of cholesterol absorption. I. Endogenous dilution and esterification of fed cholesterol-4-14C. *J. Biol. Chem.* 232 (1958), 1.
26. Vahouny, GV, CR Treadwell: Changes in lipid composition of lymph during cholesterol absorption in the rat. *Am. J. Physiol.* 191 (1957), 179.
27. Benett Clark, S, AM Tercyak: Reduced cholesterol transmucosal transport in rats with inhibited mucosal acyl CoA: Cholesterol acyltransferase and normal pancreatic function. *J. Lipid Res.* 25 (1984), 148.
28. Klein, RL, LL Rudel: Cholesterol absorption and transport in thoracic duct lymph lipoproteins of nonhuman primates. Effect of dietary cholesterol level. *J. Lipid Res.* 24 (1983), 343.
29. Fraser, R: The role of dietary triglycerides in cholesterol metabolism. *Atherosclerosis* 19 (1974), 327.
30. Doi, SQ, H Meinertz, K Nilausen, et al: Intestinal cholesterol absorption in the chyluria model. *J. Lipid Res.* 28 (1987), 1129.

Eder C. Quintão, M.D.
University of São Paulo
Medical School
Av. Dr. Arnaldo 455
CEP 01246
São Paulo, BRAZIL