

## STATISTICAL DATA REGARDING STATE COURTS

The National Center for State Courts

*Editor's note: Like the statement from the American Academy of Appellate Lawyers and the federal-court statistics that precede them in this issue, the state-court statistics in these charts were circulated to all attendees in advance of the 2005 National Conference on Appellate Justice. They informed all of the presentations and discussions at the National Conference.*



## Appellate

*Appellate courts,  
as the final arbiters  
of disputes, shape  
and define the law.*

Appellate courts, whether at the intermediate or highest level, provide review of decisions of lower courts and, as the final arbiters of disputes, shape and define the law. In most states, appellate courts are required to review decisions in criminal cases when the defendant is sentenced to death. Appellate courts are also responsible for disciplining attorneys and judges for serious violations of ethics and conduct.

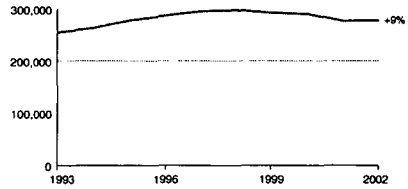
Most states divide their appellate system into two levels: an intermediate appellate court (IAC), which renders a first level of trial court review, and a court of last resort (COLR), which handles the most critical and important matters and appeals from the IACs. Only eleven states and the District of Columbia function without an IAC, while two states, Oklahoma and Texas, have more than one COLR.

Many of the analyses included here make a distinction between mandatory and discretionary caseloads in appellate courts. As the terms imply, mandatory jurisdiction over cases means that an appellate court is obligated by its state constitution or statutes to consider the merits of a case. Discretionary jurisdiction means the court decides whether it will grant review of a case.

Appellate court filings show a slight increase for the first time since 1998

- Total appellate court caseloads include original proceedings and appeals over which the appellate courts have mandatory or discretionary jurisdiction. This trend shows annual filing data for state appellate courts for the last 10 years.
- Between 1993 and 1998 the number of appellate court filings increased 17 percent, from 254,000 to 297,000. Over the next five years, filings declined 6 percent to 278,000.

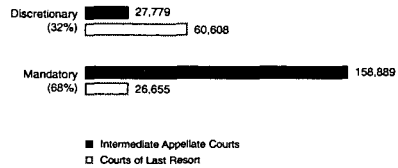
Total Appellate Court Filings, 1993-2002



Intermediate appellate courts handle most mandatory appeals

- Intermediate appellate courts provide first-level review, while courts of last resort are the final arbiters of disputes. This structure results in intermediate appellate courts handling the majority of appeals. Where there is no intermediate appellate court, a state supreme court conducts first and final appellate review.
- The caseloads in IACs and COLRs are reported here as filings of mandatory appeals and discretionary petitions. Mandatory appeals in IACs outnumbered those in COLRs by a margin of 6 to 1. Conversely, there are more than two discretionary petitions filed in COLRs for every one filed in IACs.

Total Mandatory and Discretionary Caseloads in COLRs and IACs, 2002



Appellate court filing rates vary widely across the states

States in this table are divided into those with and without an intermediate appellate court and then ranked according to their number of appeals per 100,000 population. Caseloads are shown as percentages composed of mandatory appeals and discretionary petitions.

When adjusted for population, Louisiana (population rank 24) reported the highest number of appeals (283 per 100,000 population) and North Carolina (population rank 11) reported the lowest (38 per 100,000 population).

Proportions of mandatory and discretionary caseloads vary dramatically, but several states show 100 percent mandatory or discretionary jurisdiction. These proportions were based upon the number of cases reported in each category rather than actual mandated jurisdiction. Hence, a 100 percent designation in one category could simply mean that there were no cases filed in the other category in 2002.

Total Appellate Caseloads by State, 2002

States	Appeals per 100,000 Population	Total Appeals	Mandatory Appeals	Discretionary Petitions	Population Rank
<b>With Intermediate Appellate Court</b>					
Louisiana	283	12,706	29%	71%	24
Alabama	141	6,325	82	18	23
Florida	140	23,379	83	17	4
Puerto Rico	132	5,079	33	67	27
Pennsylvania	131	16,178	83	17	6
New Jersey	123	10,546	72	28	9
Oregon	120	4,213	83	17	28
Alaska	114	736	74	26	48
Ohio	113	12,952	88	12	7
Nebraska	108	1,830	82	18	39
Texas	103	22,413	86	14	2
Kansas	99	2,676	67	33	33
Illinois	95	11,885	78	22	5
Michigan	94	9,429	44	56	8
Washington	94	5,692	70	30	15
Idaho	93	1,248	85	15	40
Kentucky	92	3,783	78	22	26
Hawaii	92	1,146	94	6	43
Arizona	91	4,951	76	24	19
Colorado	90	4,041	69	31	22
California	89	31,296	45	55	1
Virginia	88	6,440	11	89	12
New York	86	16,386	76	24	3
Arkansas	83	2,256	74	26	34
Wisconsin	83	4,522	75	25	20
Missouri	80	4,519	86	14	17
New Mexico	78	1,440	58	42	37
Iowa	73	2,137	100	0	31
South Carolina	70	2,856	59	41	25
Tennessee	65	3,784	61	39	16
Maryland	63	3,453	63	37	18
Georgia	60	5,132	68	32	10
Minnesota	59	2,942	74	26	21
Massachusetts	57	3,694	60	40	13
Utah	55	1,264	100	0	35
Indiana	52	3,185	77	23	14
Connecticut	49	1,693	71	29	30
Mississippi	49	1,401	78	22	32
North Carolina	38	3,157	55	45	11
<b>Without an Intermediate Appellate Court</b>					
District of Columbia	266	1,520	96	4	51
West Virginia	147	2,653	0	100	38
Delaware	89	715	100	0	46
Montana	88	798	73	27	45
Vermont	86	530	87	3	50
Nevada	79	1,723	100	0	36
Rhode Island	70	754	45	55	44
New Hampshire	64	813	0	100	42
South Dakota	60	457	84	16	47
North Dakota	57	363	94	6	49
Maine	57	738	76	24	41

Notes: Oklahoma and Wyoming were unable to provide data for 2002. States in blue are the nation's 10 most populous.

State appellate courts issued over 38,000 opinions

- ▶ Most appeals are resolved by opinions, memoranda/orders, or pre-argument dismissals. While opinions can be rendered through a variety of means, the data here capture only two: signed opinions and *per curiam* affirmed opinions. In 2002, 17 courts of last resort issued almost 3,700 such opinions while 24 intermediate appellate courts issued over 34,500.
- ▶ During 2002, these courts also issued more than 23,000 memoranda/orders and dismissed approximately 27,000 cases.

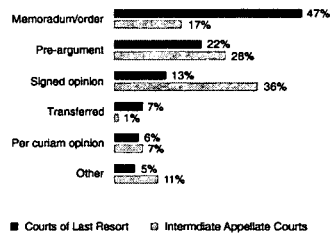
**Manner of Disposition in 17 Courts of Last Resort and 24 Intermediate Appellate Courts, 2002**

	Number of Justices	Total Dispositions	Opinions		Non-Opinion Dispositions			Other
			Signed	Per Curiam	Memo/Order	Pre-Argument	Transferred	
<b>Courts of Last Resort</b>								
Florida	7	2,977	95	213	2,669			
Nevada	7	2,454	38	61	1,767	588		
Iowa	8	2,180	180	11		928	1,015	46
District of Columbia	9	1,836	339	575	865			57
Colorado	7	1,415	121		1,287		7	
Washington	9	1,328	129		892	70	118	119
Puerto Rico	7	1,240	92	44	129	957		18
Indiana	5	1,103	195	18	190	687		13
Hawaii	5	847	191		257		258	141
Rhode Island	5	818	75	105	70	290		278
Montana	7	792	343		239	210		
Delaware	5	713	71	19	546	77		
Vermont	5	603	68		388	147		
Alaska	5	516	182	68		95		171
South Dakota	5	428	164		167	64		33
Oregon	7	371	60	40	251			20
North Dakota	5	345	189			71		85
<b>Intermediate Appellate Courts</b>								
Ohio	68	10,627	6,992			3,389		246
Pennsylvania Superior Ct.	15	8,152	5,315			2,835	2	
Michigan	28	7,647	212	102	3,636	1,793		1,904
New Jersey	34	7,280	431	3,560	250	3,039		
Pennsylvania Commonwealth Ct.	9	4,753	1,746			2,722	117	168
Washington	22	4,306	1,846		264	1,593	11	592
Oregon	10	3,844	393	118	1,483	1,660		190
Missouri	32	3,661	1,666		103	1,200	92	580
Wisconsin	16	3,486	761	523	867			1,335
Georgia	12	3,389	1,401		643	567	69	709
Massachusetts	22	2,869	363		1,071	618	76	741
Alabama Ct. of Criminal Appeals	5	2,748	122		1,673	578		375
Colorado	16	2,463	291		1,330	834		8
Maryland	13	2,351	144	1,179		500		41
Minnesota	16	2,007	1,324	3	61	609		10
Kansas	10	1,742	1,246		292		204	
Tennessee Ct. of Appeals	12	1,504	843		422	4		235
Alabama Ct. of Civil Appeals	5	1,306	323		574	358	51	
Tennessee Ct. of Criminal Appeals	12	1,304	890		288	17		109
Connecticut	9	1,271	537			262	129	243
Iowa	9	1,231	1,144	70		14		3
Arkansas	12	1,200	629			43	80	448
New Mexico	10	855	152		541	145	8	9
Alaska	3	302	55		172	31		44

Memoranda/orders are the most common disposition in state courts of last resort

- ▶ The most common dispositions in intermediate appellate courts are signed opinions and pre-argument dismissals. Together, these two actions comprise about two-thirds of all dispositions in IACs. Opinions typically include statements of fact, points of law, rationale, and dicta, while a pre-argument dismissal is based on a review of briefs rather than oral arguments.
- ▶ Nearly one-half of cases in appellate courts of last resort are resolved by a memorandum/order, which is a simple order based on a unanimous opinion. Pre-argument dismissals and signed opinions are the next most common at 22 percent and 13 percent, respectively.
- ▶ The remaining appeals are disposed of by *per curiam* opinions (usually a short opinion issued in the name of the court rather than specific justices), transfers to another court, or some other method.

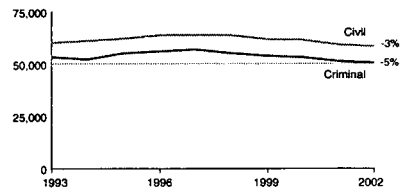
Manner of Disposition in COLRs v. IACs, 2002



Mandatory appeals in intermediate appellate courts continued to decline

- ▶ Mandatory civil and criminal appeals in IACs, those cases that the courts are statutorily required to hear, have tracked consistently with one another for the last 10 years with civil appeals averaging about 8,000 more filings per year than criminal appeals.
- ▶ In 2002, mandatory civil and criminal appeals in the 36 intermediate appellate courts featured on this chart continued a decline that began in 1998, resulting in a 3 percent decrease in civil appeals and a 5 percent decrease in criminal appeals.

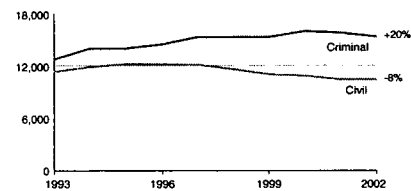
Mandatory Civil and Criminal Appeals in 36 Intermediate Appellate Courts, 1993 - 2002



Criminal petitions in courts of last resort decreased for second consecutive year

- ▶ Courts of last resort in 15 states were able to provide filing data for discretionary civil and criminal petitions from 1993 to 2002. For the ten-year period shown here, discretionary criminal petitions are up 20 percent despite a 4 percent decrease over the last two years.
- ▶ The number of discretionary civil petitions in the same 15 courts of last resort reached its peak in 1995; the number of filings then remained constant for three years. From 1997 to 2001, filings declined annually. The number of civil petitions filed in 2002 was virtually the same as in 2001. Overall, there has been an 8 percent decline in the last 10 years.

Discretionary Criminal and Civil Petitions in 15 Courts of Last Resort, 1993-2002

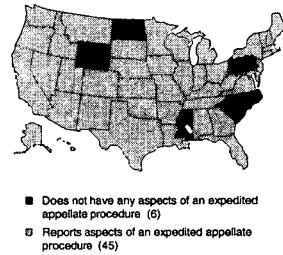




The majority of states expedite dependency appeals to speed permanent placement

- ▶ Forty-four states and the District of Columbia report having at least some aspect of an expedited appellate procedure for dependency cases. Only six states report not having any such procedure.
- ▶ Strategies to expedite appeals include developing a tracking system, devising and implementing penalties for delay, reducing briefing schedules, limiting oral argument, and expediting the assembling of the record and transcript preparation.
- ▶ States have formalized expedited processes through court rules (23 states), statutes (15 states), or constitutional amendments (one state). Internal operating procedures may also be used to expedite cases. Often, states have more than one legal process for expediting dependency appeals. For example, Georgia has utilized a constitutional amendment, state statute, and internal operating procedures.

Status of Expedited Procedures as of July 2002

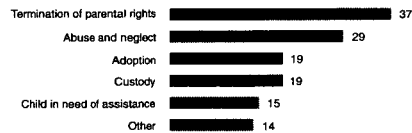


Source: Dependency Appeals: Strategies to Reduce Delay, 2nd Edition, NCSC, 2003

Termination of parental rights is the most common of expedited dependency appeals

- ▶ Case types that may be classified as dependency appeals include termination of parental rights (TPR), abuse and neglect, adoption, custody, children in need of assistance, domestic violence cases that include custody issues, guardianship of a minor, and visitation appeals.
- ▶ Many states expedite more than one case type. In fact, most states expedite two or more case types, and many expedite any appeal that involves a child-related issue.

Number of States Supporting Expedited Dependency Appeals by Type of Case

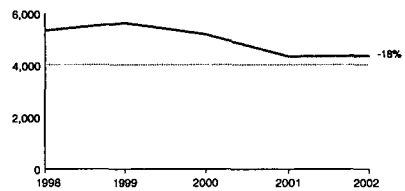




Administrative agency appeals have decreased 18 percent over the last five years

- ▶ Administrative agencies are licensing or regulatory bodies that oversee policies regarding worker's compensation, unemployment compensation, public utilities, historic preservation, etc. These agencies typically have a combination of legislative, executive, and judicial functions that they use to carry out legislatively mandated policy. Thus, an administrative agency appeal is an appeal of a decision made by one of these agencies.
- ▶ The number of administrative agency appeals in 11 state appellate courts has been declining since 1999. The greatest decline (-16 percent) occurred in 2001 when the number of filings fell by almost 1,000 cases.

Administrative Agency Appeals in 11 States, 1998-2002



**TABLE 1: Reported National Caseload for State Appellate Courts, 2002**

<u>Reported Caseload</u>	<u>Filed</u>	<u>Disposed</u>	
<b>Courts of last resort:</b>			
<b>I. Mandatory jurisdiction appeals:</b>			
A. Number of reported complete cases	26,437	26,993	
Number of courts reporting complete data	44	43	
B. Number of reported complete cases that include some discretionary petitions	2,060	1,562	
Number of courts reporting complete data with some discretionary petitions	4	3	
C. Number of reported cases that are incomplete	669	348	
Number of courts reporting incomplete data	3	1	
D. Number of reported cases that are incomplete and include some discretionary petitions	573	612	
Number of courts reporting incomplete data that include some discretionary petitions	1	1	
<b>II. Discretionary jurisdiction petitions:</b>			
A. Number of reported complete petitions	59,739	58,153	
Number of courts reporting complete petitions	47	44	
B. Number of reported complete petitions that include some mandatory cases	0	2,265	
Number of courts reporting complete petitions that include some mandatory cases	0	3	
C. Number of reported petitions that are incomplete	1,371	1,253	
Number of courts reporting incomplete petitions	2	1	
<b>Intermediate appellate courts:</b>			
<b>I. Mandatory jurisdiction appeals:</b>			
A. Number of reported complete cases	127,022	132,464	
Number of courts reporting complete data	36	36	
B. Number of reported complete cases that include some discretionary petitions	27,644	37,810	
Number of courts reporting complete data with some discretionary petitions	7	7	
C. Number of reported cases that are incomplete	4,722	4,753	
Number of courts reporting incomplete data	1	1	
<b>II. Discretionary jurisdiction petitions:</b>			
A. Number of reported complete petitions	27,769	27,747	
Number of courts reporting complete petitions	21	21	
B. Number of reported complete petitions that include some mandatory cases	0	0	
Number of courts reporting complete petitions that include some mandatory cases	0	0	
C. Number of reported petitions that are incomplete	0	0	
Number of courts reporting incomplete petitions	0	0	
<b>Summary section for all appellate courts:</b>			
	<b>Reported Filings</b>		
	<u>COLR</u>	<u>IAC</u>	<u>Total</u>
A. Number of reported complete cases/petitions	86,176	154,791	240,967
B. Number of reported complete cases/petitions that include other case types	2,060	27,644	29,704
C. Number of reported cases/petitions that are incomplete	2,040	4,722	6,762
D. Number of reported cases/petitions that are incomplete and include other case types	573	0	573
<b>Total</b>	<b>90,849</b>	<b>187,157</b>	<b>278,006</b>
	<b>Reported Dispositions</b>		
	<u>COLR</u>	<u>IAC</u>	<u>Total</u>
A. Number of reported complete cases/petitions	85,146	160,211	245,357
B. Number of reported complete cases/petitions that include other case types	3,827	37,810	41,637
C. Number of reported cases/petitions that are incomplete	1,601	4,753	6,354
D. Number of reported cases/petitions that are incomplete and include other case types	612	0	612
<b>Total</b>	<b>91,186</b>	<b>202,774</b>	<b>293,960</b>

TABLE 2: Reported Total Caseload for All State Appellate Courts, 2002

State/Court name:	TOTAL CASES FILED						
	Total mandatory cases filed	Total discretionary petitions filed	Total discretionary petitions filed granted	Sum of mandatory cases and discretionary petitions filed		Sum of mandatory cases and discretionary petitions filed granted	
				Number	Filed per judge	Number	Filed per judge
States with one or more court of last resort and one intermediate appellate court							
<b>ALASKA</b>							
Supreme Court	258	157	21	415	83	279	56
Court of Appeals	286	35	6	321	107	292	97
State Total	544	192	27	736	92	571	71
<b>ARIZONA</b>							
Supreme Court	177	1,050	NA	1,227	245		
Court of Appeals	3,608	116	NA	3,724	169		
State Total	3,785	1,166		4,951	183		
<b>ARKANSAS</b>							
Supreme Court	320 A	446	110	766	109	430	61
Court of Appeals	1,345	145	18	1,490	124	1,363	114
State Total	1,665 *	591	128	2,256	119	1,793	94
<b>CALIFORNIA</b>							
Supreme Court	23	8,894	136 A	8,917	1,274	159	23
Courts of Appeal	13,825	8,454	NA	22,379	213		
State Total	13,948	17,348		31,296	279		
<b>COLORADO</b>							
Supreme Court	111 A	1,257	NA	1,368	195		
Court of Appeals	2,673	NJ	NJ	2,673	167	2,673	167
State Total	2,784 *	1,257		4,041	176		
<b>CONNECTICUT</b>							
Supreme Court	46	499	63	545	78	109	16
Appellate Court	1,148 B	(B)	NA				
State Total	1,194 *						
<b>FLORIDA</b>							
Supreme Court	143	2,634	NA	2,777	397		
District Courts of Appeal	19,226	1,376	NA	20,602	332		
State Total	19,369	4,010		23,379	339		
<b>GEORGIA</b>							
Supreme Court	682	1,190	86	1,872	267	768	110
Court of Appeals	2,825	435	NA	3,260	272		
State Total	3,507	1,625		5,132	270		
<b>HAWAII</b>							
Supreme Court	819	67	NA	886	177		
Intermediate Court of Appeals	260	NJ	NJ	260	65	260	65
State Total	1,079	67		1,146	127		
<b>IDAHO</b>							
Supreme Court	573 C	184	NA	757	151		
Court of Appeals	491	NJ	NJ	491	164	491	164
State Total	1,064 *	184		1,248	156		
<b>ILLINOIS*</b>							
Supreme Court	730	2,579	98	3,309	473	828	118
Appellate Court	8,676 B	(B)	NA	8,676	167		
State Total	9,406 *			11,985	203		

TOTAL CASES DISPOSED						
<u>Total mandatory cases disposed</u>	<u>Total discretionary petitions disposed</u>	<u>Total discretionary petitions granted disposed</u>	<u>Sum of mandatory cases and discretionary petitions disposed</u>	<u>Sum of mandatory cases and discretionary petitions granted disposed</u>	<u>Court type</u>	<u>Point at which cases are counted</u>
339	177	NA	516		COLR	1
266	36	NA	302		IAC	1
605	213		818			
173	1,091	NA	1,264		COLR	6
3,444	111	NA	3,555		IAC	6
3,617	1,202		4,819			
348 A	436	110	784	458	COLR	2
1,062	138	18	1,200	1,080	IAC	2
1,410 *	574	128	1,984	1,538		
21	8,781	74	8,802	95	COLR	6
17,117	8,348	NA	25,465		IAC	2
17,138	17,129		34,267			
(B)	1,415 B	NA	1,415		COLR	1
2,463	NJ	NJ	2,463	2,463	IAC	1
	1,415 *		3,878			
(B)	539 B	NA	539		COLR	1
1,271 B	(B)	NA	1,271		IAC	1
			1,810			
139	2,838	NA	2,977		COLR	1
19,014	1,237	NA	20,251		IAC	1
19,153	4,075		23,228			
514	1,479	47	1,993	561	COLR	2
2,973	416	NA	3,389		IAC	2
3,487	1,895		5,382			
778	69	NA	847		COLR	2
204	NJ	NJ	204	204	IAC	2
982	69		1,051			
612 C	198	NA	810		COLR	1
507	NJ	NJ	507	507	IAC	4
1,119 *	198		1,317			
682	2,407	0	3,089	682	COLR	1
9,419 B	(B)	NA	9,419		IAC	1
10,101 *			12,508			

(continued on next page)

TABLE 2: Reported Total Caseload for All State Appellate Courts, 2002 (continued)

State/Court name:	TOTAL CASES FILED						
	Total mandatory cases filed	Total discretionary petitions filed	Total discretionary petitions filed granted	Sum of mandatory cases and discretionary petitions filed		Sum of mandatory cases and discretionary petitions filed granted	
				Number	Filed per judge	Number	Filed per judge
<b>IOWA</b>							
Supreme Court	1,076 B	(B)	NA	1,076	135		
Court of Appeals	1,061	NJ	NJ	1,061	118	1,061	118
State Total	2,137 *			2,137	126		
<b>KANSAS</b>							
Supreme Court	160	883	19	1,043	149	179	26
Court of Appeals	1,635 B	(B)	NA	1,635	164		
State Total	1,795 *			2,678	158		
<b>KENTUCKY</b>							
Supreme Court	413	742	NA	1,155	165		
Court of Appeals	2,553	75	NA	2,628	188		
State Total	2,966	817		3,783	180		
<b>LOUISIANA</b>							
Supreme Court	227	3,029	306	3,256	485	533	76
Courts of Appeal	3,494	5,956	1,665	9,450	178	5,159	97
State Total	3,721	8,985	1,971	12,706	212	5,692	95
<b>MARYLAND</b>							
Court of Appeals	238 A	721	120	959	137	358	51
Court of Special Appeals	1,926	568	8	2,494	192	1,934	149
State Total	2,164 *	1,289	128	3,453	173	2,292	115
<b>MASSACHUSETTS</b>							
Supreme Judicial Court	290	752	NA	1,042	149		
Appeals Court	1,911	741	NA	2,652	121		
State Total	2,201	1,493		3,694	127		
<b>MICHIGAN</b>							
Supreme Court	2	2,271	NA	2,273	325		
Court of Appeals	4,109	3,047	NA	7,156	256		
State Total	4,111	5,318		9,429	269		
<b>MINNESOTA</b>							
Supreme Court	112	674	130	786	112	242	39
Court of Appeals	2,065	91	NA	2,156	135		
State Total	2,177	765		2,942	128		
<b>MISSISSIPPI**</b>							
Supreme Court	1,099	302	62				
Court of Appeals	NA	NJ	NJ				
State Total	1,099	302	62	1,401	74	1,161	61
<b>MISSOURI</b>							
Supreme Court	182	623	51	805	115	233	33
Court of Appeals	3,714	NJ	NJ	3,714	116	3,714	116
State Total	3,896	623	51	4,519	116	3,947	101
<b>NEBRASKA</b>							
Supreme Court	75	328	48	403	58	123	18
Court of Appeals	1,427	NJ	NJ	1,427	238	1,427	238
State Total	1,502	328	48	1,830	141	1,550	119

## TOTAL CASES DISPOSED

Total mandatory cases disposed	Total discretionary petitions disposed	Total discretionary petitions granted disposed	Sum of mandatory cases and discretionary petitions disposed	Sum of mandatory cases and discretionary petitions granted disposed	Court type	Point at which cases are counted
191	1,999	NA	2,180		COLR	1
1,231	NJ	NJ	1,231	1,231	IAC	4
1,422	1,999		3,411			
1,059 B	(B)	NA	1,059		COLR	5
1,742 B	(B)	NA	1,742		IAC	5
2,801 *			2,801			
398	725	NA	1,123		COLR	6
2,790	86	NA	2,876		IAC	3
3,188	811		3,999			
218	3,232	181	3,450	399	COLR	2
4,319	6,426	1,633	10,745	5,952	IAC	2
4,537	9,658	1,814	14,195	6,351		
230	718	NA	948		COLR	2
1,813	568	NA	2,381		IAC	2
2,043	1,286		3,329			
204	633	NA	837		COLR	2
2,128	741	NA	2,869		IAC	2
2,332	1,374		3,706			
2	2,052	NA	2,054		COLR	1
4,633	3,014	NA	4,633		IAC	1
4,635	5,066		6,687			
121	83	66	204	187	COLR	1
1,909	98	85	2,007	1,994	IAC	1
2,030	181	151	2,211	2,181		
653	289	NA	942		COLR	2
810	NJ	NJ	810	610	IAC	2
1,263	289		1,552			
193	616	51	809	244	COLR	1
3,661	NJ	NJ	3,661	3,661	IAC	1
3,854	616	51	4,470	3,905		
(B)	311 B	NA	311		COLR	1
1,311	NJ	NJ	1,311	1,311	IAC	1
	311 *		1,622			

(continued on next page)



TABLE 2: Reported Total Caseload for All State Appellate Courts, 2002 (continued)

State/Court name:	TOTAL CASES FILED						
	Total mandatory cases filed	Total discretionary petitions filed	Total discretionary petitions filed granted	Sum of mandatory cases and discretionary petitions filed		Sum of mandatory cases and discretionary petitions filed granted	
				Number	Filed per judge	Number	Filed per judge
<b>NEW JERSEY</b>							
Supreme Court	528	2,949	149	3,477	497	677	97
Appellate Div. of Super. Ct.	7,069	0	NA	7,069	208		
State Total	7,597	2,949		10,546	257		
<b>NEW MEXICO</b>							
Supreme Court	59	515	52	574	115	111	22
Court of Appeals	781	85	NA	866	87		
State Total	840	600		1,440	96		
<b>NORTH CAROLINA</b>							
Supreme Court	107	662	37	769	110	144	21
Court of Appeals	1,620	768	138	2,388	199	1,758	147
State Total	1,727	1,430	175	3,157	166	1,902	100
<b>OHIO</b>							
Supreme Court	678	1,529	114	2,207	315	792	113
Courts of Appeals	10,745	NJ	NJ	10,745	158	10,745	158
State Total	11,423	1,529	114	12,952	173	11,537	154
<b>OKLAHOMA***</b>							
Supreme Court	1,339	502	NA	1,841	205		
Court of Criminal Appeals	1,462	NJ	NJ	1,462	292	1,462	292
Court of Appeals	499	NJ	NJ	499	42	499	42
State Total	3,300	502		3,802	146		
<b>OREGON</b>							
Supreme Court	231	701	57	932	133	288	41
Court of Appeals	3,277	NJ	NJ	3,277	328	3,277	328
State Total	3,508	701	57	4,209	248	3,567	210
<b>PUERTO RICO</b>							
Supreme Court	125	1,029	NA	1,154	165		
Circuit Court of Appeals	1,576	2,349	NA	3,925	119		
State Total	1,701	3,378		5,079	127		
<b>SOUTH CAROLINA</b>							
Supreme Court	213	1,185	NA	1,398	280		
Court of Appeals	1,458	NJ	NJ	1,458	162	1,458	162
State Total	1,671	1,185		2,856	204		
<b>TEXAS</b>							
Supreme Court	6	1,295	112	1,301	144	118	13
Court of Criminal Appeals	7,177	1,951	146	9,128	1,014	7,323	814
Courts of Appeals	11,984	NJ	NJ	11,984	150	11,984	150
State Total	19,167	3,246	258	22,413	229	19,425	198
<b>UTAH</b>							
Supreme Court	529 B	(B)	NA	529	106		
Court of Appeals	735 B	(B)	NA	735	105		
State Total	1,264 *						
<b>VIRGINIA</b>							
Supreme Court	0	3,028	294	3,026	432	294	42
Court of Appeals	737	2,677	385	3,414	310	1,122	102
State Total	737	5,703	679	6,440	358	1,416	79

## TOTAL CASES DISPOSED

Total mandatory cases disposed	Total discretionary petitions disposed	Total discretionary petitions granted disposed	Sum of mandatory cases and discretionary petitions disposed	Sum of mandatory cases and discretionary petitions granted disposed	Court type	Point at which cases are counted
536	3,009	NA	3,545		COLR	1
7,280	0	NA	7,280		IAC	1
7,816	3,009		10,825			
45	457	52	502	97	COLR	5
855 B	(B)	NA	855		IAC	5
900 *			1,357			
131	601	43	732	174	COLR	2
1,726	715	NA	2,441		IAC	2
1,857	1,318		3,173			
752	1,365	NA	2,117		COLR	1
10,627	NJ	NJ	10,627	10,627	IAC	1
11,379	1,365		12,744			
1,625	502	NA	2,127		COLR	1
1,424	NJ	NJ	1,424	1,424	COLR	2
737	NJ	NJ	737	737	IAC	4
3,766	502		4,268			
276	808	NA	1,084		COLR	1
3,844	NJ	NJ	3,844	3,844	IAC	1
4,120	808		4,928			
156	1,084	NA	1,240		COLR	1
1,538	2,344	NA	3,882		IAC	1
1,694	3,428		5,122			
249	1,322	NA	1,562		COLR	2
1,438	NJ	NJ	1,438	1,438	IAC	4
1,678	1,322		3,000			
6	1,306	106	1,312	112	COLR	1
6,965	2,017	143	8,982	7,108	COLR	5
12,399	NJ	NJ	12,399	12,399	IAC	1
19,370	3,323	249	22,693	19,619		
NA	NA	NA			COLR	1
NA	NA	NA			IAC	1
0	2,992	0	2,992	0	COLR	1
768	2,691	NA	3,459		IAC	1
768	5,683		6,451			

(continued on next page)

TABLE 2: Reported Total Caseload for All State Appellate Courts, 2002 (continued)

State/Court name:	TOTAL CASES FILED						
	Total mandatory cases filed	Total discretionary petitions filed	Total discretionary petitions filed granted	Sum of mandatory cases and discretionary petitions filed		Sum of mandatory cases and discretionary petitions filed granted	
				Number	Filed per judge	Number	Filed per judge
WASHINGTON							
Supreme Court	72 B	1,297 A	NA	1,369	152		
Court of Appeals	3,927	396	NA	4,323	197		
State Total	3,999 *	1,693 *		5,692	184		
WISCONSIN							
Supreme Court	54	1,126	0	1,180	169		
Court of Appeals	3,342 B	(B)	NA	3,342	209		
State Total	3,396 *			4,522	197		
States with no intermediate appellate court							
DELAWARE							
Supreme Court	715	0	NA	715	143		
DISTRICT OF COLUMBIA							
Court of Appeals	1,466	54	2	1,520	169	1,468	163
MAINE							
Supreme Judicial Court	560	178	NA	738	105		
MONTANA							
Supreme Court	584	214	NA	798	114		
NEVADA							
Supreme Court	1,723	NJ	NJ	1,723	246	1,723	246
NEW HAMPSHIRE							
Supreme Court	NJ	813	NA	813	163		
NORTH DAKOTA							
Supreme Court	340	23	NA	363	73		
RHODE ISLAND							
Supreme Court	339	415	146	754	151	485	97
SOUTH DAKOTA							
Supreme Court	383 B	74 A	NA	457	91		
VERMONT							
Supreme Court	514	16	NA	530	106		
WEST VIRGINIA							
Supreme Court of Appeals	NJ	2,653	757	2,653	531	757	151
WYOMING****							
Supreme Court	283	NJ	NJ	283	57	283	57

## TOTAL CASES DISPOSED

Total mandatory cases disposed	Total discretionary petitions disposed	Total discretionary petitions granted disposed	Sum of mandatory cases and discretionary petitions disposed	Sum of mandatory cases and discretionary petitions granted disposed	Court type	Point at which cases are counted
75 B	1,253 A	NA	1,328		COLR	6
3,893	413	NA	4,306		IAC	6
3,968 *	1,666 *		5,634			
39	1,148	100	1,187	136	COLR	6
3,466 B	(B)	NA	3,466		IAC	6
3,525 *			4,673			
713	0	NA	713		COLR	1
1,779	57	NA	1,836		COLR	1
600	259	NA	859		COLR	1
594	198	23	792	617	COLR	1
1,866	NJ	NJ	1,866	1,866	COLR	2
NJ	939	NA	939		COLR	1
319	26	NA	345		COLR	1
396	422	NA	818		COLR	1
428 B	(B)	NA	428		COLR	2
590	13	NA	603		COLR	1
NJ	2,686	1,165	2,686	1,165	COLR	1
271	NJ	NJ	271	271	COLR	1

(continued on next page)

TABLE 2: Reported Total Caseload for All State Appellate Courts, 2002 (continued)

State/Court name:	TOTAL CASES FILED						
	Total mandatory cases filed	Total discretionary petitions filed	Total discretionary petitions filed granted	Sum of mandatory cases and discretionary petitions filed		Sum of mandatory cases and discretionary petitions filed granted	
				Number	Filed per judge	Number	Filed per judge
<b>States with one court of last resort and two intermediate appellate courts</b>							
<b>ALABAMA</b>							
Supreme Court	1,254	1,130	NA	2,384	265		
Court of Civil Appeals	1,293	NJ	NJ	1,293	259	1,293	259
Court of Criminal Appeals	2,648	NJ	NJ	2,648	530	2,648	530
State Total	5,195	1,130		6,325	333		
<b>INDIANA</b>							
Supreme Court	241	748	NA	989	198		
Court of Appeals	2,055	NA	261			2,316	154
Tax Court	141	NJ	NJ	141	9	141	9
State Total	2,437						
<b>NEW YORK</b>							
Court of Appeals	292	3,986	NA	4,278	611		
Appellate Div. of Sup. Ct.	10,019 B	(B)	NA	10,019	179		
Appellate Terms of Sup. Ct.	2,089 B	(B)	NA	2,089	139		
State Total	12,400 *			16,386	210		
<b>PENNSYLVANIA</b>							
Supreme Court	532	2,701	NA	3,233	462		
Superior Court	8,160	NJ	NJ	8,160	544	8,160	544
Commonwealth Court	4,722 A	63	NA	4,785	532		
State Total	13,414 *			16,178	522		
<b>TENNESSEE</b>							
Supreme Court	173	1,056	79	1,229	246	252	50
Court of Criminal Appeals	1,111	133	24	1,244	104	1,135	95
Court of Appeals	1,042	269	51	1,311	109	1,093	91
State Total	2,326	1,458	154	3,784	130	2,480	86

**COURT TYPE:**

- COLR = Court of last resort
- IAC = Intermediate appellate court

**POINTS AT WHICH CASES ARE COUNTED:**

- 1 = At the notice of appeal
- 2 = At the filing of trial record
- 3 = At the filing of trial record and complete briefs
- 4 = At transfer
- 5 = Other
- 6 = Varies

## TOTAL CASES DISPOSED

Total mandatory cases disposed	Total discretionary petitions disposed	Total discretionary petitions granted disposed	Sum of mandatory cases and discretionary petitions disposed	Sum of mandatory cases and discretionary petitions granted disposed	Court type	Point at which cases are counted
1,334	1,193	NA	2,527		COLR	1
1,306	NJ	NJ	1,306	1,306	IAC	1
2,748	NJ	NJ	2,748	2,748	IAC	1
5,388			6,581			
307	796	95	1,103	402	COLR	6
1,980	NA	261		2,241	IAC	6
132	NJ	NJ	132	132	IAC	6
2,419		356		2,775		
176	4,076	117	4,252	293	COLR	1
19,109 B	(B)	NA	19,109		IAC	2
1,928 B	(B)	NA	1,928		IAC	2
21,213 *			25,289			
742	2,763	NA	3,505		COLR	6
8,150	NJ	NJ	8,150	8,150	IAC	1
4,753 A	NA	NA			IAC	1
13,645 *						
255	1,014	NA	1,269		COLR	1
1,178	126	NA	1,304		IAC	1
1,265	239	NA	1,504		IAC	1
2,698	1,379		4,077			

## NOTE:

NA = Indicates that the data are unavailable. Blank spaces indicate that a calculation is inappropriate.

NJ = This case type is not handled in this court.

(B) = Mandatory and discretionary jurisdiction cases cannot be separately identified. Data are reported within the jurisdiction where the court has the majority of its caseload.

(continued on next page)

TABLE 2: Reported Total Caseload for All State Appellate Courts, 2002 (continued)

**QUALIFYING FOOTNOTES:**

An absence of a qualifying footnote indicates that the data are complete.

\* See the qualifying footnote for each court within the state. Each footnote has an effect on the state's total.

\*\* Total mandatory cases filed in the Mississippi Supreme Court represent all mandatory cases filed for the state.

\*\*\* Oklahoma Supreme Court and Court of Appeals data were not available for 2002. Data are repeated from 1998.

\*\*\*\* Wyoming appellate data were not available for 2002. Data are repeated from 2001.

**A: The following courts' data are incomplete:**

Arkansas—Supreme Court—Total mandatory filed and disposed data do not include mandatory attorney disciplinary cases and certified questions from the federal courts.

California—Supreme Court—Total discretionary petitions granted filed data do not include original proceedings.

Colorado—Supreme Court—Total mandatory filed data do not include some reopened cases, some disciplinary matters, and some interlocutory decisions.

Maryland—Court of Appeals—Total mandatory filed data do not include some civil, criminal, and original proceedings.

Pennsylvania—Commonwealth Court—Total mandatory filed and disposed data do not include some administrative agency cases and some original proceedings.

South Dakota—Supreme Court—Total discretionary petitions filed data do not include some advisory opinions, which are reported with mandatory jurisdiction cases.

Washington—Supreme Court—Total discretionary petitions filed and disposed data do not include some civil and criminal discretionary petitions that are reported with mandatory jurisdiction cases.

**B: The following courts' data are overinclusive:**

Colorado—Supreme Court—Total discretionary petitions disposed data include all mandatory jurisdiction cases.

Connecticut—Supreme Court—Total discretionary petitions disposed data include all mandatory jurisdiction cases.  
—Appellate Court—Total mandatory filed and disposed data include discretionary petitions.

Illinois—Appellate Court—Total mandatory filed and disposed data include all discretionary petitions.

Iowa—Supreme Court—Total mandatory filed data include all discretionary petitions.

Kansas—Supreme Court—Total mandatory disposed data include discretionary petitions that were disposed.

—Court of Appeals—Total mandatory filed and disposed data include all discretionary petitions.

Nebraska—Court of Appeals—Total discretionary petitions disposed data include all mandatory jurisdiction cases.

New Mexico—Court of Appeals—Total mandatory disposed data include all discretionary petitions.

New York—Appellate Divisions of Supreme Court—Total mandatory filed and disposed data include all discretionary petitions.

—Appellate Terms of Supreme Court—Total mandatory filed and disposed data include discretionary petitions.

South Dakota—Supreme Court—Total mandatory filed data include discretionary advisory opinions. Total mandatory disposed data include all discretionary petitions that were disposed.

Utah—Supreme Court—Total mandatory filed data include all discretionary petitions.

—Court of Appeals—Total mandatory filed data include all discretionary petitions.

Washington—Supreme Court—Total mandatory filed and disposed data include some discretionary petitions.

Wisconsin—Court of Appeals—Total mandatory filed and disposed data include all discretionary petitions.

**C: The following courts' data are both incomplete and overinclusive:**

Idaho—Supreme Court—Total mandatory filed and disposed data include discretionary original proceedings, but do not include mandatory interlocutory decisions or advisory opinions.

Table A: Mandatory Filings in Courts of Last Resort, 1984 - 2003

State/Court	Type	1984	1985	1986	1987	1988	1989	1990	1991	1992	1993	1994	1995	1996	1997	1998	1999	2000	2001	2002	2003	% Chgo 84-03
1 ALABAMA Supreme Court	COUR	445	436	467	503	509	508	498	1,100	1,100	1,111	1,153	1,170	1,200	1,230	1,260	1,290	1,320	1,350	1,380	1,410	151
2 ALASKA Supreme Court	COUR	23	34	31	38	35	34	32	347	356	315	365	386	353	333	268	297	285	274	274	254	161
3 ARIZONA Supreme Court	COUR	105	81	118	116	159	92	92	347	356	315	365	386	353	333	268	297	285	274	274	254	161
4 ARKANSAS Supreme Court	COUR	479	439	411	459	406	442	482	534	512	514	567	548	548	562	413	370	418	401	320	385	270
5 CALIFORNIA Supreme Court	COUR	222	294	238	315	319	380	522	31	36	38	27	30	30	30	36	33	45	32	31	23	20
6 COLORADO Supreme Court	COUR	256	200	205	214	197	205	228	202	186	170	162	161	183	179	205	147	132	83	69	111	101
7 CONNECTICUT Supreme Court	COUR	58	58	58	58	58	58	58	302	254	268	258	38	58	67	30	29	54	63	46	43	43
8 DELAWARE Supreme Court	COUR	331	406	417	397	473	483	473	483	530	542	488	530	502	551	554	558	658	582	715	681	681
9 DISTRICT OF COLUMBIA Court of Appeals	COUR	1,810	1,770	1,556	1,500	1,624	1,515	1,650	1,567	1,643	1,724	1,689	1,632	2,008	2,028	1,943	1,757	1,698	1,604	1,468	1,664	1,664
10 FLORIDA Supreme Court	COUR	141	157	191	170	158	191	210	232	215	210	212	102	99	99	100	98	117	109	143	113	113
11 GEORGIA Supreme Court	COUR	663	692	616	640	639	674	690	696	706	613	708	695	675	757	681	588	633	642	682	610	610
12 HAWAII Supreme Court	COUR	471	498	604	616	715	690	488	688	541	605	610	721	715	695	713	730	646	828	819	731	731
13 IDAHO Supreme Court	COUR	349	346	368	289	342	368	349	398	400	398	400	398	400	398	400	398	400	398	400	398	400
14 ILLINOIS Supreme Court	COUR	497	477	477	477	477	477	477	477	477	477	477	477	477	477	477	477	477	477	477	477	477
15 INDIANA Supreme Court	COUR	409	409	409	409	409	409	409	409	409	409	409	409	409	409	409	409	409	409	409	409	409
16 IOWA Supreme Court	COUR	1,528	1,528	1,528	1,528	1,528	1,528	1,528	1,528	1,528	1,528	1,528	1,528	1,528	1,528	1,528	1,528	1,528	1,528	1,528	1,528	1,528
17 KANSAS Supreme Court	COUR	189	177	189	214	347	179	165	147	184	201	334	283	271	224	230	198	164	154	160	124	124
18 KENTUCKY Supreme Court	COUR	281	282	251	261	258	304	281	357	316	289	416	398	526	436	444	434	401	379	413	398	398
19 LOUISIANA Supreme Court	COUR	147	79	112	135	123	108	82	106	157	175	143	128	146	153	185	195	182	227	228	238	238
20 MAINE Supreme Judicial Court	COUR	81	60	59	631	528	540	622	646	569	654	1,038	988	841	724	778	752	442	529	560	515	515
21 MARYLAND Court of Appeals	COUR	220	218	238	233	242	205	261	259	222	253	243	223	246	254	255	280	270	255	238	285	285
22 MASSACHUSETTS Supreme Judicial Court	COUR	141	129	86	72	96	75	86	81	90	93	123	125	134	152	152	288	267	264	290	290	290
23 MICHIGAN Supreme Court	COUR	5	3	4	5	4	4	4	2	2	2	6	1	1	2	3	10	4	5	2	2	5
24 MINNESOTA Supreme Court	COUR	0	175	241	271	248	282	269	269	229	222	208	178	205	171	106	120	125	113	112	121	121
25 MISSISSIPPI Supreme Court	COUR	838	815	1,010	891	919	773	951	912	1,057	1,133	1,133	1,133	1,133	1,133	1,133	1,133	1,133	1,133	1,133	1,133	1,133
26 MISSOURI Supreme Court	COUR	566	566	566	566	566	566	566	566	566	566	566	566	566	566	566	566	566	566	566	566	566
27 MONTANA Supreme Court	COUR	1,002	997	1,014	1,198	1,103	1,497	1,270	834	40	32	69	54	60	44	52	52	80	77	75	65	65
28 NEBRASKA Supreme Court	COUR	789	777	853	856	991	997	1,069	1,080	1,129	1,138	1,256	1,350	1,911	1,835	1,943	1,894	1,803	1,803	1,723	1,841	1,841
29 NEVADA Supreme Court	COUR	368	227	236	349	357	413	387	501	407	369	410	212	487	546	450	522	488	515	528	411	411
30 NEW JERSEY Supreme Court	COUR	322	303	325	320	296	368	302	289	280	0	502	486	451	432	350	350	300	287	292	287	287
31 NEW MEXICO Supreme Court	COUR	680	680	680	680	680	680	680	680	680	680	680	680	680	680	680	680	680	680	680	680	680
32 NEW YORK Court of Appeals	COUR	230	222	249	182	147	109	116	137	112	120	131	119	102	81	84	78	61	84	107	114	114
33 NORTH CAROLINA Supreme Court	COUR	370	338	377	382	376	397	442	456	391	409	366	403	367	387	380	370	334	285	340	364	364
34 NORTH DAKOTA Supreme Court	COUR	338	442	491	422	500	535	685	592	581	705	812	818	943	891	880	674	620	875	678	636	636
35 OHIO Supreme Court	COUR	789	1,128	788	1,105	809	862	1,003	732	1,509	1,458	1,442	1,411	1,411	1,411	1,411	1,411	1,411	1,411	1,411	1,411	1,411
36 OKLAHOMA Supreme Court	COUR	502	697	829	980	1,046	1,046	1,244	1,268	1,288	1,288	1,288	1,288	1,288	1,288	1,288	1,288	1,288	1,288	1,288	1,288	1,288
37 OKLAHOMA Court of Criminal Appeals	COUR	265	180	145	176	192	217	194	197	230	172	201	201	329	326	278	278	278	278	278	278	278
38 OREGON Supreme Court	COUR	288	142	92	60	121	94	225	97	270	289	395	209	363	96	54	129	140	104	125	104	104
39 FLORIDA Supreme Court	COUR	479	403	389	323	410	465	405	445	413	449	463	407	406	478	411	363	372	342	338	281	281
41 RHODE ISLAND Supreme Court	COUR	479	451	519	511	624	483	602	339	587	417	443	301	275	355	203	203	140	329	213	262	262
42 SOUTH CAROLINA Supreme Court	COUR	409	409	409	409	409	409	409	409	409	409	409	409	409	409	409	409	409	409	409	409	409
43 SOUTH DAKOTA Supreme Court	COUR	344	358	363	422	428	387	403	366	354	386	351	358	412	367	403	436	396	436	383	398	398
44 TENNESSEE Supreme Court	COUR	216	139	146	170	161	161	107	192	239	271	314	400	434	400	349	264	330	200	173	161	161
45 TEXAS Supreme Court	COUR	0	2	3	3	3	3	3	2	7	2	13	0	9	5	14	4	4	11	6	0	0
46 TEXAS Court of Criminal Appeals	COUR	1,958	1,998	2,221	2,450	3,578	3,504	2,281	2,189	2,751	2,870	3,590	4,232	4,963	6,287	7,910	8,769	8,714	8,822	7,177	7,726	7,726
47 UTAH Supreme Court	COUR	640	628	623	474	443	498	566	553	553	592	631	584	558	616	577	662	604	530	529	594	594
48 VERMONT Supreme Court	COUR	623	575	550	538	620	619	590	542	610	622	634	640	633	558	557	555	545	582	514	553	553
49 VIRGINIA Supreme Court	COUR	13	13	13	13	13	13	13	13	13	13	13	13	13	13	13	13	13	13	13	13	13
50 WASHINGTON Supreme Court	COUR	228	194	162	135	117	101	148	137	162	146	113	111	111	94	75	63	73	63	73	72	72
51 WYOMING Supreme Court	COUR	351	306	342	320	357	321	314	301	302	308	333	345	357	350	361	355	354	353	307	272	272
Total Mandatory COLR Filings		21,488	21,659	22,090	22,647	24,386	25,442	25,026	23,667	23,160	23,332	28,308	28,484	30,880	32,349	34,383	34,138	31,651	29,683	29,704	30,168	40.4%



Table B: Mandatory Filings in Intermediate Appellate Courts, 1984 - 2003

State/Court	52	53	54	55	56	57	70	73	80	83	1948	1530	1447	1437	1437	1437	1404	1301	1293	1182
1 ALABAMA Court of Civil Appeals	1,426	1,357	1,260	1,184	1,132	2,042	1,953	2,027	2,094	2,260	2,400	2,384	2,472	2,573	2,513	2,630	2,704	2,648	2,291	1,922
2 ALABAMA Court of Criminal Appeals	1,481	1,400	1,320	1,260	1,212	2,042	1,953	2,027	2,094	2,260	2,400	2,384	2,472	2,573	2,513	2,630	2,704	2,648	2,291	1,922
3 ALASKA Court of Appeals	1,481	1,400	1,320	1,260	1,212	2,042	1,953	2,027	2,094	2,260	2,400	2,384	2,472	2,573	2,513	2,630	2,704	2,648	2,291	1,922
4 ARIZONA Court of Appeals	2,753	3,352	3,483	3,902	3,858	4,491	4,746	4,803	3,722	3,340	3,298	3,810	3,607	3,710	3,551	3,354	3,262	3,158	3,345	3,381
5 ARIZONA Court of Criminal Appeals	855	846	951	899	1,079	1,096	1,200	1,021	1,129	1,091	1,141	1,077	1,121	1,185	1,300	1,355	1,410	1,478	1,518	1,381
6 CALIFORNIA Courts of Appeal	10,116	10,252	10,035	9,985	10,954	13,012	13,024	14,763	14,308	14,207	14,923	15,641	16,881	15,931	16,188	16,447	14,728	13,925	13,437	12,589
7 COLORADO Court of Appeals	1,580	1,626	1,662	1,930	1,946	2,269	2,147	2,201	2,209	2,287	2,179	2,289	2,245	2,410	2,647	2,502	2,335	2,673	2,589	2,589
8 CONNECTICUT Appellate Court	1,362	1,324	1,352	1,362	1,362	1,362	1,362	1,362	1,362	1,362	1,362	1,362	1,362	1,362	1,362	1,362	1,362	1,362	1,362	1,362
9 CONNECTICUT Superior Court	11,770	12,262	13,502	13,861	14,382	14,386	15,670	18,492	15,799	15,658	18,241	18,542	18,332	17,599	17,424	18,083	18,183	19,228	18,729	18,729
10 GEORGIA Court of Appeals	2,071	1,946	2,066	2,071	2,066	2,066	2,066	2,066	2,066	2,066	2,066	2,066	2,066	2,066	2,066	2,066	2,066	2,066	2,066	2,066
11 HAWAII Intermediate Court of Appeals	1,148	1,148	1,148	1,148	1,148	1,148	1,148	1,148	1,148	1,148	1,148	1,148	1,148	1,148	1,148	1,148	1,148	1,148	1,148	1,148
12 IDAHO Court of Appeals	1,148	1,148	1,148	1,148	1,148	1,148	1,148	1,148	1,148	1,148	1,148	1,148	1,148	1,148	1,148	1,148	1,148	1,148	1,148	1,148
13 ILLINOIS Appellate Court	1,148	1,148	1,148	1,148	1,148	1,148	1,148	1,148	1,148	1,148	1,148	1,148	1,148	1,148	1,148	1,148	1,148	1,148	1,148	1,148
14 ILLINOIS Appellate Court	1,148	1,148	1,148	1,148	1,148	1,148	1,148	1,148	1,148	1,148	1,148	1,148	1,148	1,148	1,148	1,148	1,148	1,148	1,148	1,148
15 INDIANA Court of Appeals	1,148	1,148	1,148	1,148	1,148	1,148	1,148	1,148	1,148	1,148	1,148	1,148	1,148	1,148	1,148	1,148	1,148	1,148	1,148	1,148
16 IOWA Court of Appeals	569	730	552	618	726	1,176	1,201	1,207	1,389	1,488	1,797	1,155	1,275	1,884	1,894	1,845	1,745	1,855	1,588	1,088
17 IOWA Court of Criminal Appeals	1,041	1,087	1,131	1,176	1,154	1,201	1,207	1,389	1,488	1,797	1,155	1,275	1,884	1,894	1,845	1,745	1,855	1,588	1,088	1,088
18 KENTUCKY Court of Appeals	2,725	3,156	2,769	2,681	2,665	2,712	2,569	2,802	3,040	2,924	2,977	3,126	3,242	3,080	3,064	3,084	2,690	2,553	2,690	2,690
19 LOUISIANA Courts of Appeal	3,870	3,578	3,695	3,967	3,562	3,762	3,956	4,008	4,007	4,070	3,920	4,092	3,964	4,140	4,220	4,557	3,733	3,494	3,141	3,141
20 MARYLAND Court of Special Appeals	1,777	1,642	1,644	1,714	1,754	1,841	2,006	2,035	1,956	2,031	1,974	2,121	2,042	1,913	1,951	1,962	1,968	1,893	1,928	1,928
21 MASSACHUSETTS Appellate Court	1,375	1,301	1,352	1,434	1,394	1,451	1,568	1,527	1,871	1,814	2,068	2,095	2,126	2,235	2,329	2,298	2,164	1,731	1,911	1,630
22 MICHIGAN Court of Appeals	4,786	5,187	6,687	8,188	8,559	10,951	12,340	11,825	10,159	9,270	8,054	7,581	5,762	5,008	4,214	4,083	4,074	4,108	4,345	4,345
23 MINNESOTA Court of Appeals	1,767	1,924	2,065	1,772	1,772	2,157	1,828	2,314	2,337	2,380	2,497	2,353	2,177	2,174	1,895	1,999	2,145	2,065	2,250	2,250
24 MISSISSIPPI Court of Appeals	0	0	0	0	0	0	0	0	0	0	0	0	0	0	0	0	0	0	0	0
25 MISSOURI Court of Appeals	2,852	3,166	3,147	3,055	3,315	3,659	3,706	3,826	4,032	4,473	4,405	4,539	4,168	3,842	3,678	3,724	3,611	3,714	3,776	3,776
26 NEBRASKA Court of Appeals	0	0	0	0	0	0	0	0	0	0	0	0	0	0	0	0	0	0	0	0
27 NEW JERSEY Appellate Div. of Super. Ct.	6,224	6,037	6,106	6,277	6,458	6,932	7,007	6,969	6,871	6,712	7,148	7,307	7,911	7,969	7,788	7,361	7,286	7,182	7,069	7,120
28 NEW YORK Court of Appellate Div. of Sup. Ct.	9,205	9,202	9,711	9,205	10,946	13,338	10,577	10,768	10,778	10,750	10,819	11,941	11,965	11,986	11,986	11,986	11,986	11,986	11,986	11,986
29 NEW YORK Appellate Term of Sup. Ct.	2,208	2,208	2,208	2,208	2,208	2,208	2,208	2,208	2,208	2,208	2,208	2,208	2,208	2,208	2,208	2,208	2,208	2,208	2,208	2,208
30 NORTH CAROLINA Court of Appeals	1,314	1,375	1,381	1,265	1,351	1,478	1,408	1,325	1,304	1,329	1,400	1,478	1,470	1,565	1,553	1,719	1,582	1,618	1,620	1,747
31 NORTH CAROLINA Court of Criminal Appeals	9,383	9,522	9,683	9,983	10,005	10,771	11,032	11,377	11,010	11,032	11,435	12,455	12,488	11,713	11,079	10,384	10,760	10,745	11,202	11,202
32 OHIO Court of Appeals	788	835	971	931	1,362	1,373	1,323	1,184	1,143	1,495	1,249	1,117	581	489	499	499	499	499	499	499
33 OKLAHOMA Court of Appeals	3,828	3,981	4,146	4,305	3,739	3,795	4,584	5,123	5,102	4,410	4,440	4,426	4,466	4,631	4,319	4,024	3,977	4,084	3,277	3,314
34 OREGON Court of Appeals	5,783	5,878	5,989	6,137	6,439	6,040	6,291	6,743	7,121	6,964	7,554	7,606	7,817	9,001	8,000	7,299	8,131	7,839	8,160	8,165
35 PENNSYLVANIA Superior Court	4,012	3,554	3,737	3,030	3,164	3,115	3,491	3,774	4,208	4,300	4,839	5,724	5,450	5,603	4,490	4,210	4,447	4,722	4,540	4,540
36 PENNSYLVANIA Commonwealth Court	0	0	0	0	0	0	0	0	0	0	0	0	0	0	0	0	0	0	0	0
37 PUERTO RICO Court of Appeals	0	0	0	0	0	0	0	0	0	0	0	0	0	0	0	0	0	0	0	0
38 SOUTH CAROLINA Court of Appeals	404	391	351	440	307	448	370	425	383	585	461	608	756	907	965	900	1,413	1,458	1,414	1,414
39 TENNESSEE Court of Criminal Appeals	868	850	895	811	794	889	980	889	1,007	1,007	1,167	1,088	1,374	1,165	1,143	1,165	1,161	1,119	1,042	1,004
40 TENNESSEE Court of Appeals	7,959	7,825	7,825	8,290	8,290	8,290	8,290	8,290	8,290	8,290	8,290	8,290	8,290	8,290	8,290	8,290	8,290	8,290	8,290	8,290
41 TEXAS Court of Criminal Appeals	0	0	0	0	0	0	0	0	0	0	0	0	0	0	0	0	0	0	0	0
42 UTAH Court of Appeals	0	0	0	0	0	0	0	0	0	0	0	0	0	0	0	0	0	0	0	0
43 VIRGINIA Court of Appeals	0	0	0	0	0	0	0	0	0	0	0	0	0	0	0	0	0	0	0	0
44 WASHINGTON Court of Appeals	2,866	3,270	3,535	3,238	3,157	3,222	3,653	3,789	3,903	3,663	3,678	3,618	3,974	3,613	3,797	3,756	3,927	3,975	3,975	3,975
45 WISCONSIN Court of Appeals	2,239	2,358	2,653	2,185	2,147	2,355	2,853	2,970	3,187	3,290	3,345	3,532	3,628	3,717	3,279	3,472	3,421	3,342	3,452	3,452
<b>Total Mandatory IAC Filings</b>	<b>118,484</b>	<b>121,416</b>	<b>127,959</b>	<b>130,479</b>	<b>136,251</b>	<b>142,188</b>	<b>148,881</b>	<b>151,745</b>	<b>160,736</b>	<b>155,497</b>	<b>157,253</b>	<b>160,295</b>	<b>170,983</b>	<b>171,725</b>	<b>183,161</b>	<b>184,567</b>	<b>160,450</b>	<b>160,450</b>	<b>160,450</b>	<b>159,034</b>
<b>Total Mandatory Appeals Filed</b>	<b>139,972</b>	<b>143,075</b>	<b>150,049</b>	<b>153,126</b>	<b>160,617</b>	<b>167,430</b>	<b>173,907</b>	<b>175,412</b>	<b>185,916</b>	<b>180,829</b>	<b>185,599</b>	<b>194,789</b>	<b>201,653</b>	<b>204,074</b>	<b>202,544</b>	<b>199,705</b>	<b>196,528</b>	<b>190,123</b>	<b>189,811</b>	<b>185,202</b>

Note: Numbers in *boldface italics* are estimates. At the beginning of trends, these estimates are based upon the first actual filing figure and straight-lined backward to 1984. At the end of trends, the last valid filing figure is carried forward to 2003. In-year estimates are interpolated through mean value replacement. Zeros in boldface (0) indicate that the court did not exist that year. Blank cells indicate that the court did not have jurisdiction over that type of case (e.g., mandatory jurisdiction) that year.

